



- 1 K99-0354
FILLING VALVE WITH NF FOR ETERNA
- 2 K99-0355
PNEUMATIC FLUSHING VALVE FOR ETERNA
- 3 K99-0345
GASKET FOR OUTLET KNEE FOR ETERNA
- 4 K99-0350
ADJUSTABLE OUTLET KNEE FOR ETERNA
- 5 K99-0353
ANGLE FLEXIBLE CONNECTOR HOSE 300 MM FOR ETERNA
- 6 K99-0348
OUTLET KNEE CLAMPING RING FOR ETERNA
- 7 K99-0352
CUT OFF ANGULAR VALVE FOR ETERNA
- 8 K99-0349
GASKET FOR INLET KNEE FOR ETERNA
- 9 K99-0344
LONG INLET KNEE FOR ETERNA
- 10 K99-0347
OUTLET PIPE FOR ETERNA
- 11 K99-0341
FRESH SYSTEM DISPENSER FOR ETERNA
- 12 K99-0351
MOUNTING SET FOR ETERNA
- 13 K99-0343
INSPECTION PLATE FOR CISTERN OF ETERNA
- 14 K99-0342
INSPECTION TUNNEL FOR ETERNA
- 15 K99-0346
INLET PIPE FOR ETERNA

● K99-0346



INLET PIPE FOR ETERNA

Inlet pipe for ETERNA concealed frame.
Package contains: inlet pipe – 1 pc.; gasket – 1 pc.

● K99-0347



OUTLET PIPE FOR ETERNA

Outlet pipe 90 mm for ETERNA concealed frame.
Package contains: outlet pipe – 1 pc; gasket – 1 pc.

● K99-0348



OUTLET KNEE CLAMPING RING FOR ETERNA

Outlet knee clamping ring for ETERNA concealed frame.
Package contains: outlet knee clamp – 1 pc; screw 4.8 x 19 mm – 2 pcs;
outlet knee clamp latch – 1 pc.

● K99-0353



ANGLE FLEXIBLE CONNECTOR HOSE 300 MM FOR ETERNA

Angle, flexible connector hose, 300 mm long for ETERNA concealed frame.
Package contains: connector hose – 1 pc.

● K99-0355



PNEUMATIC FLUSHING VALVE FOR ETERNA

Pneumatic flushing valve for ETERNA concealed frame. Reliable valve operation confirmed by tests for 50 000 cycles. Adjustable for economical flushing to 2/4L or for ClearZone type wall hung bowls 3/5L or standard ones 3/6L.
Package contents: pneumatic flushing valve – 1 pc; flushing valve grip – 1 pc.

● K99-0349



GASKET FOR INLET KNEE FOR ETERNA

Inlet knee gasket for ETERNA concealed frame.
Package content: inlet knee gasket – 1 pc.

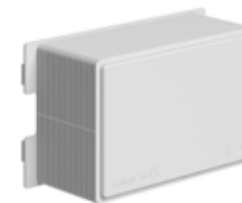
● K99-0345



GASKET FOR OUTLET KNEE FOR ETERNA

Outlet knee gasket for ETERNA concealed frame.
Package content: outlet knee gasket – 1 pc.

● K99-0342



INSPECTION TUNNEL FOR ETERNA

Inspection tunnel for ETERNA concealed frame.
Package contains: inspection tunnel – 1 pc.

● K99-0343



INSPECTION PLATE FOR CISTERN OF ETERNA

Cistern inspection plate for ETERNA. Package contains:
cistern inspection plate – 1 pc; plate lock – 2 pcs.

● K99-0344



LONG INLET KNEE FOR ETERNA

Long inlet knee for ETERNA concealed frame. Package contains:
long inlet knee – 1 pc; inlet knee plug – 1 pc; inlet knee gasket – 1 pc.

● K99-0341



FRESHZONE DISPENSER FOR ETERNA

FreshZone dispenser for ETERNA concealed frame. The system is a perfect solution for anyone wishing to use fresheners with rimless ClearZone wall hung bowls. A total and fresh solution for all-round toilet hygiene.

● K99-0350



ADJUSTABLE OUTLET KNEE FOR ETERNA

Adjustable outlet knee with 3-stage depth adjustment for ETERNA concealed frame. Depth adjustment significantly facilitates the work during frame installation. Package contains: adjustable outlet knee – 1 pc; outlet knee gasket – 1 pc; outlet knee plug – 1 pc.

● K99-0352



CUT OFF ANGULAR VALVE FOR ETERNA

Cut-off angular valve 3/8 inch. The model is dedicated for ETERNA concealed frame. Available with connector 1/2 inch. The valve and connector are made of high quality brass. Package contains: cut-off valve – 1 pc.; connector with brass sleeve – 1 pc; coupling nut – 1 pc.

● K99-0354



FILLING VALVE WITH NF FOR ETERNA

Filling valve for ETERNA concealed frame. The valve quality is proven by NF quality certificate and ensures quiet operation during filling (class I). Package contains: filling valve (noise class I) with NF certificate – 1 pc.; filling valve grip – 1 pc.

● K99-0351



MOUNTING SET FOR ETERNA

Mounting set for ETERNA concealed frame. Package contains: caps for pins – 2 pcs; pin guide – 2 pcs.; pins for wall hung bowls – threaded rod M 12 x 160 galvanized DIN 975 / DIN 976 – 2 pcs; plastic cover for pins 18 mm – 2 pcs; hex nut M 12 DIN 934 – 4 pcs; galvanized washer \varnothing 13 x \varnothing 34 x 2.5 mm – 2 pcs; inspection tunnel – 1 pc; connector with brass sleeve – 1 pc; coupling nut – 1 pc; angle, flexible connector hose 300 mm long – 1 pc; cut-off valve with replaceable head – 1 pc; EasyZone short wall bracket – 2 pcs; washer screw M 8 x 70 – 4 pcs; wall plugs 12 x 60 mm – 4 pcs.