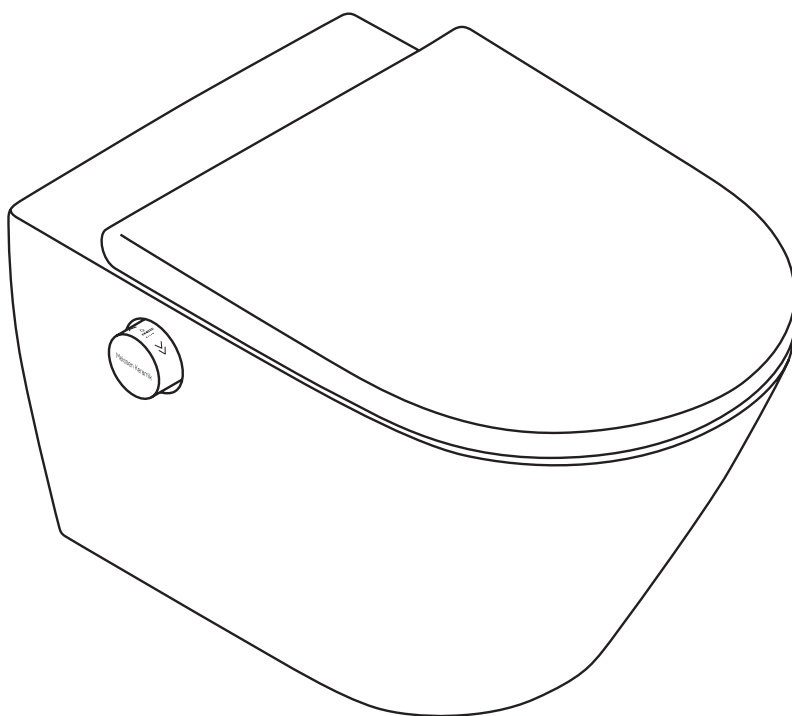


# Meissen Keramik

## INSTRUCTION MANUAL

for the GENERA Manual Shower Toilet





**Thank you for purchasing MEISSEN KERAMIK shower toilet.**

**IMPORTANT:**

Read and understand this manual before installing and using this product! The illustrations in this manual are for reference only and may differ from the actual appearance of the product.

# Table of contents

---

<b>Chapter 1 Safety principles</b> .....	<b>2</b>
1.1 Symbols and their meaning .....	2
1.2 Intended use .....	3
1.3 Precautions for use .....	4
<b>Chapter 2 List of parts</b> .....	<b>5</b>
<b>Chapter 3 First startup</b> .....	<b>6</b>
3.1 Checking the functioning of the washing nozzle .....	6
3.2 Checking the temperature of the wash water .....	7
<b>Chapter 4 Use</b> .....	<b>9</b>
4.1 Activating and deactivating the wash function .....	9
4.2 Setting the water temperature .....	10
<b>Chapter 5 Cleaning and maintenance</b> .....	<b>11</b>
5.1 Shower toilet cleaning .....	11
5.2 Removing and cleaning the washing nozzle inside .....	11
5.3 Unplugging and plugging in the toilet seat .....	15
<b>Chapter 6 Troubleshooting</b> .....	<b>16</b>
<b>Chapter 7 Technical data</b> .....	<b>17</b>

# Rozdział 1 Safety principles

---

To ensure safe and trouble-free use of the shower toilet, read the user manual and observe the safety rules!

## 1.1 Symbols and their meaning



### Caution

This symbol indicates hazards that may lead to injury and/or damage to the shower toilet or other property if ignored.

---

#### Meaning of symbols:



**OBLIGATORY**  
Action



**PROHIBITED**  
Action

---

## 1.2 Intended use



If you have any questions about the operation of the device, please contact the customer service infoline. To avoid product failure and damage due to improper use, please read this manual.

Children and persons who do not understand the intended use of the product, or who have physical, sensory, mental or other disabilities, may use the product only if it has been explained to them how they can use it safely or under the supervision.

The shower toilet is not a toy – children must not play with the product as this can lead to injuries or death.

The device must be connected to the water supply system. Do not use the shower toilet if it is not working properly.

In the event of a malfunction or failure, close the shut-off valve to cut off the water supply and stop using the shower toilet. Contact the customer service helpline.

Malfunctions and faults can manifest themselves as:

- a crack or damage to the product
- water leakage from pipes or the appliance

**Using a damaged appliance may result in flooding or other damage.**

Do not lift the product by gripping the lid.



### Caution

Use clean and softened water for supply to ensure proper product operation. Using hard or dirty water can cause damage or malfunction of the washing system.



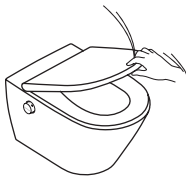
Do not allow children to play, stand or sit on the lid. Do not place heavy objects on it.

**This may lead to injuries or damage to the appliance.**



Do not install the appliance in a room where the temperature is below 4°C.

**This may damage the appliance.**



Do not force the lid or seat to close.

**This may cause damage to the product.**



Do not use aggressive, concentrated or abrasive cleaning agents.

**This may damage the product.**



Do not lean against the lid. This may cause damage or injury.

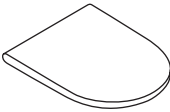
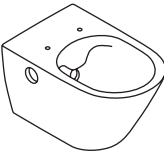
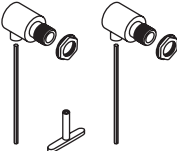

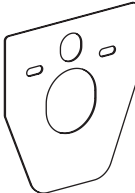





Do not supply contaminated water, seawater or untreated water to the appliance, as this may cause infection or skin irritation.

### 1.3 Precautions for use

Connect the appliance to the water supply system using the new hoses supplied with the product. Do not use used or aftermarket hoses to connect the shower toilet. Prevent the spray nozzle from contamination or blocking. Do not use accessories that are not recommended by the manufacturer.

# Chapter 2 List of parts

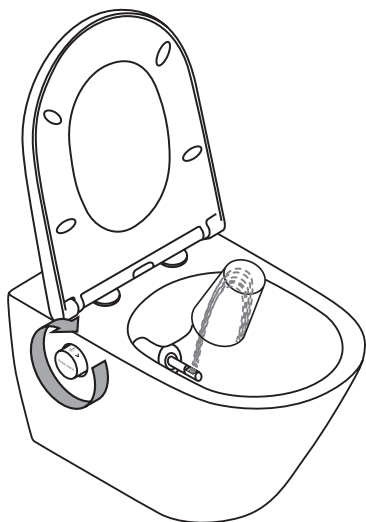
			
A. Toilet seat	A. Ceramic bowl with shower system	C. Bowl mounting kit.	D. Installation Instructions and Operating Instructions
			
E. Foam pad	F. Slide paste	G. Additional washing nozzle tips	H. Tool for removing the washing nozzle



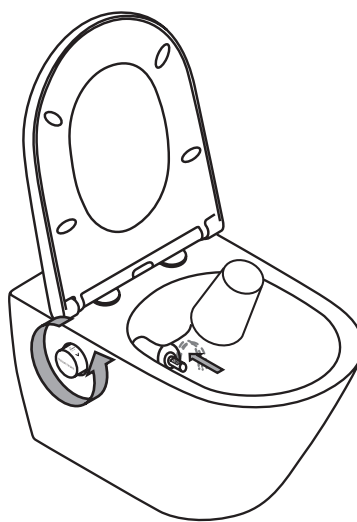
## Chapter 3 First startup

### 3.1 Checking the functioning of the washing nozzle

Check the functioning of the washing nozzle before first use. Before checking, prepare a cup or other vessel to block the water stream from the wash nozzle.



**A.** While holding the cup upside down at the height of the extended nozzle, turn the knob that activates the wash water jet forward. When you turn the knob, the nozzle should slide out and water should flow from it. Block the stream with the cup so that the water flows inside the shower toilet bowl.



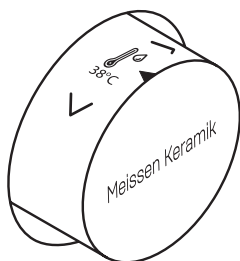
**B.** Then turn the knob back to close the water supply. Check to see if the nozzle has retracted.

**If the nozzle does not work properly, contact the service center.**

## 3.2 Checking the temperature of the wash water

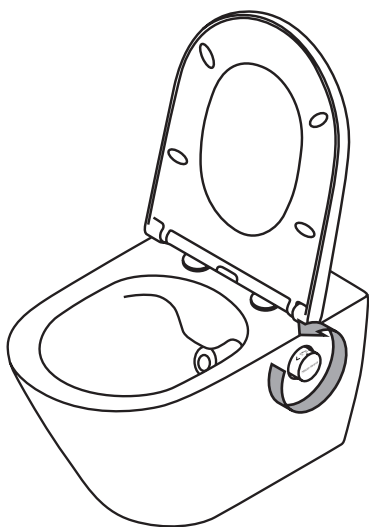


Maximum wash water temperature should not exceed 42°C.

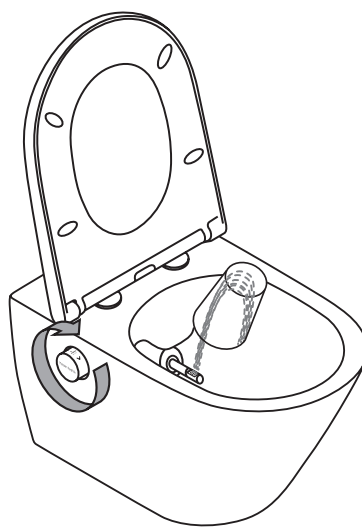


In the default setting of the thermostat knob (Meissen Keramik logo on the knob set horizontally), the wash water temperature should be approx. 38°C

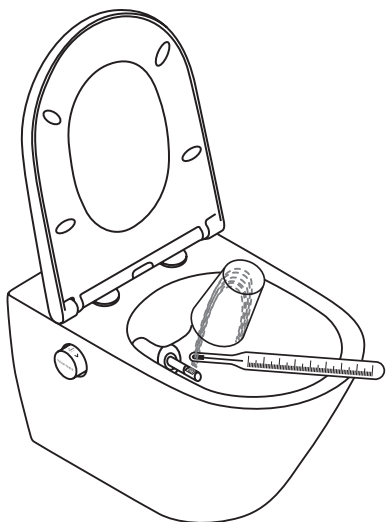
To check the water temperature, prepare a cup or other vessel to block the water stream from the wash nozzle.



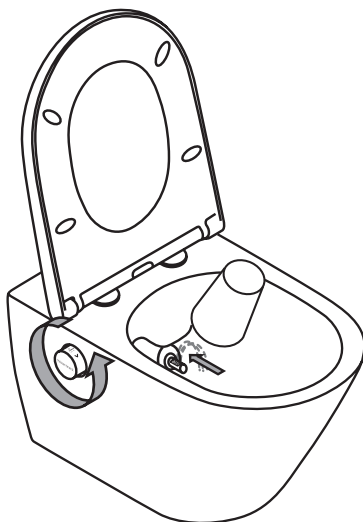
**A.** Turn the thermostat knob all the way forward to set the maximum wash water temperature.



**B.** While holding the cup upside down at the height of the extended nozzle, turn the knob that activates the wash water jet forward.



**C.** Check the temperature of the water coming out of the wash nozzle. If its value exceeds 42°C, contact the service center.



**D.** Turn the knob back to close the water supply.

# Chapter 4 Use

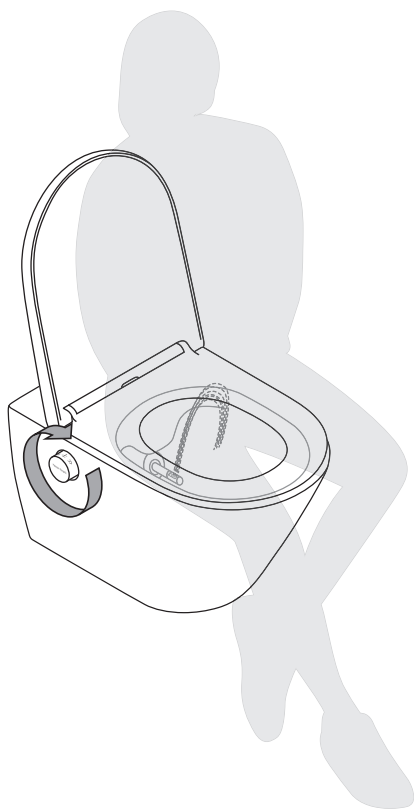
## 4.1 Activating and deactivating the wash function



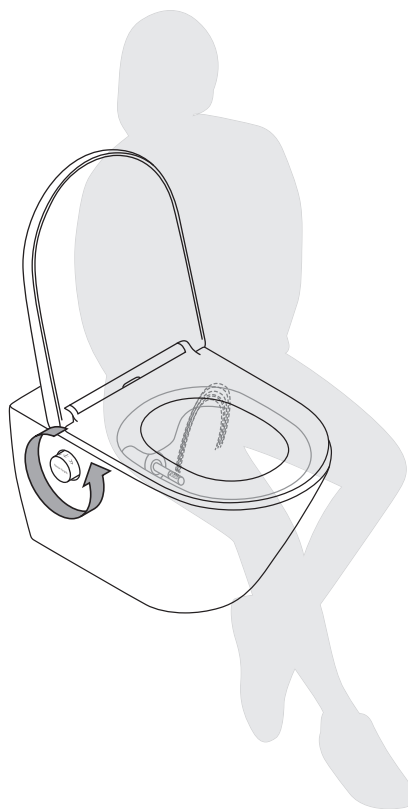
Start the wash function when the user is sitting on the seat part of the toilet seat. Otherwise, activating the wash function poses a risk of flooding the bathroom or toilet.



Opening and closing the nozzle should be done slowly to stabilize the thermostat water temperature and to flush the wash nozzle.



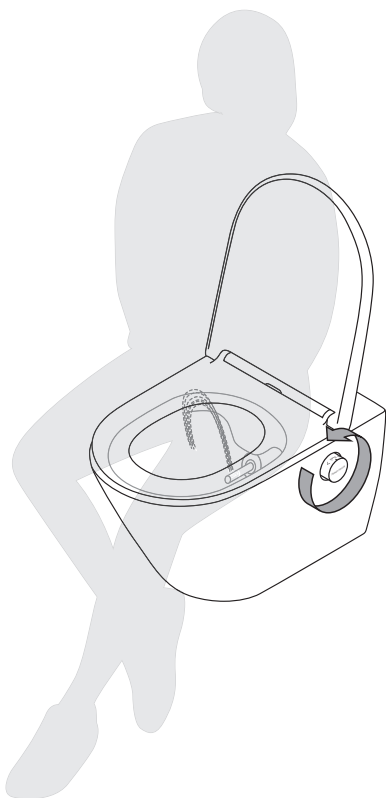
**A.** To activate the wash function, while sitting on the seat, turn the knob that activates the wash water stream forward. When the knob is turned, the wash nozzle will slide out of the ceramic part, starting a stream of water.



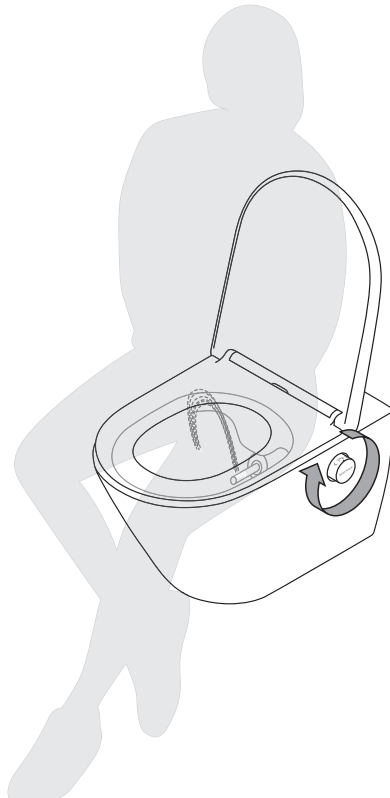
**B.** Turn the wash nozzle knob all the way back to complete the cleaning process.

## 4.2 Setting the water temperature

The water temperature is regulated by a thermostatic valve. It takes time to reach a certain temperature depending on the temperature of the mains water.



**A.** To increase the temperature, turn the thermostat knob forward.



**B.** To reduce the temperature, turn the thermostat knob backwards.

## Chapter 5 Cleaning and maintenance

### 5.1 Shower toilet cleaning

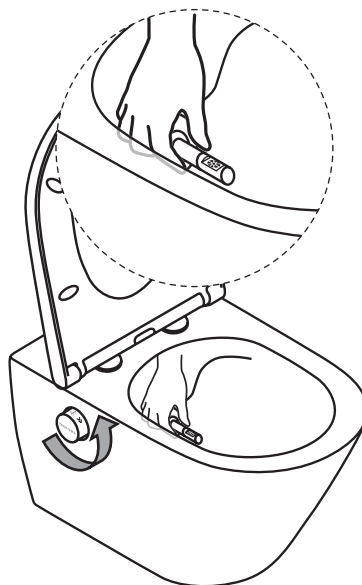


Clean the appliance and wipe out any dirt on a regular basis. If the product is not cleaned regularly, it can lead to dirt buildup that is difficult to remove. Do not use abrasive cleaning agents or those containing chlorine or acids. Follow the instructions of the cleaning agent manufacturer. Rinse the cleaning nozzle after each use of cleaning agents, so that the cleaning agent residue does not remain on the nozzle because it may cause skin irritation during subsequent washing.

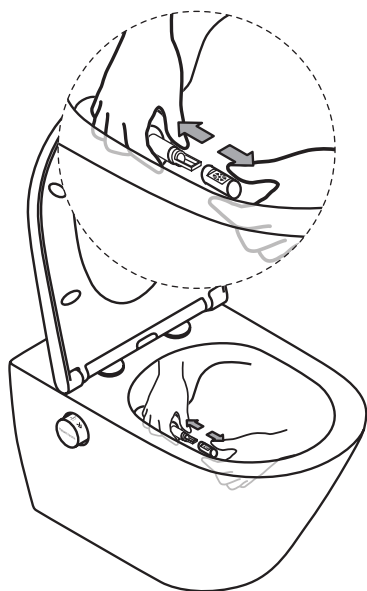
### 5.2 Removing and cleaning the washing nozzle inside



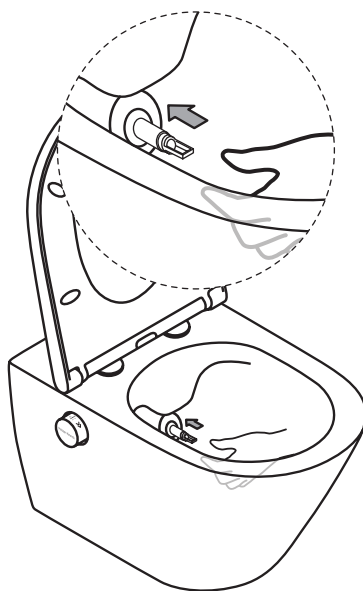
**A.** To remove the wash nozzle, turn the wash water jet knob slightly forward so that the nozzle slides out at low water pressure.



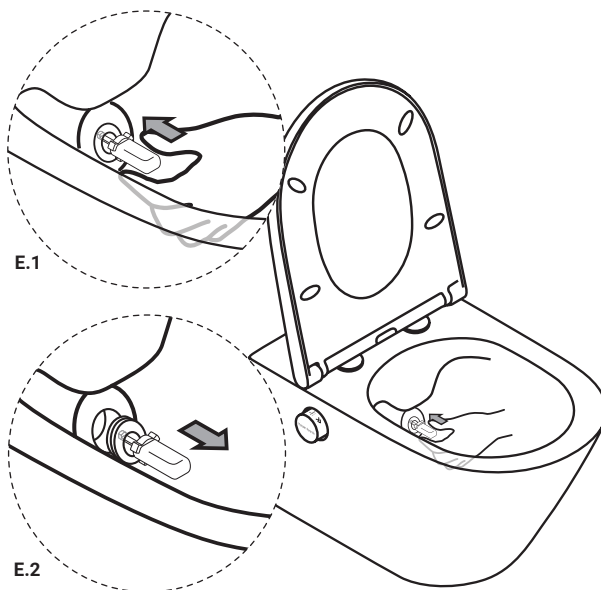
**B.** Then grab the wash nozzle with your hand and turn the wash water jet knob backward to close the jet.



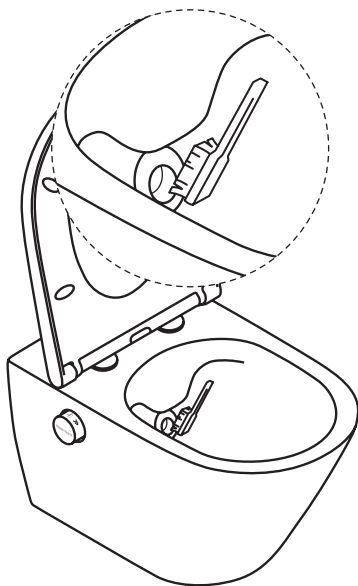
**C.** Carefully remove the wash nozzle tip.



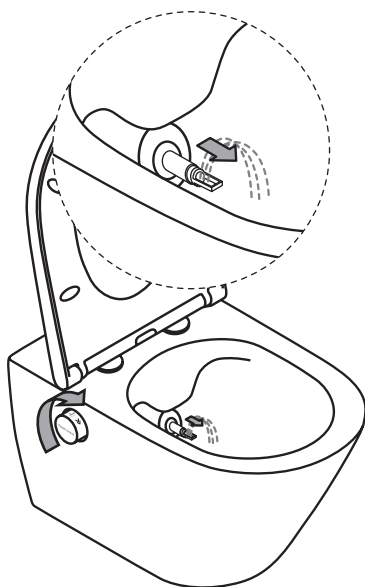
**D.** Then release the wash nozzle to retract it.



**E.** Using the wrench provided with the wash bowl, remove the ring that stabilizes the wash nozzle.



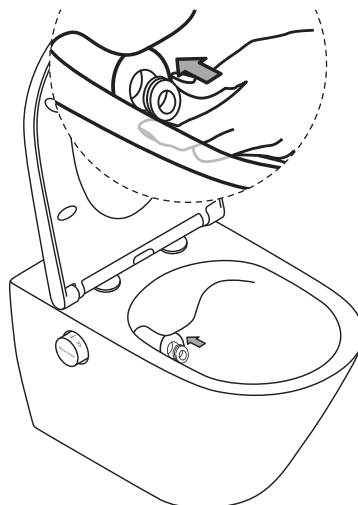
**F.** Then use a brush or cloth to wipe around the wash nozzle and the wash nozzle stabilizer ring.



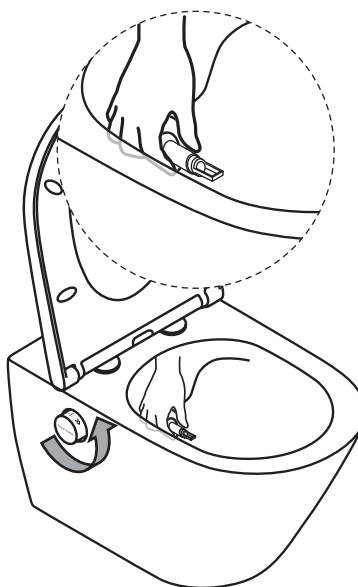
**H.** Then turn the wash water jet activation knob forward so that the nozzle slides out at low water pressure.



An improperly or inaccurately fitted ring can cause the wash nozzle to jam during use.



**G.** After cleaning, place the wash nozzle stabilizer ring back in place, making sure it is in the correct position. The tab on the ring should be at the bottom.

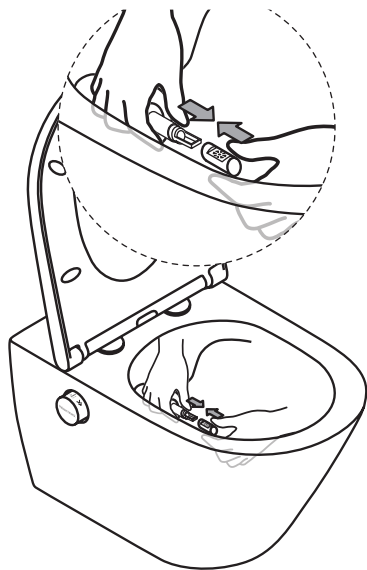


**I.** Grab the nozzle and turn the water spray knob backward to close the spray.

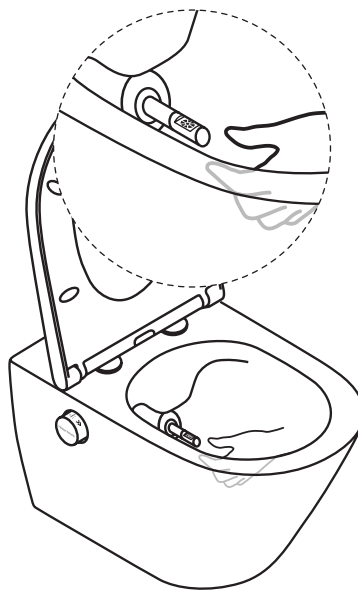




Improper or inaccurate seating of the nozzle tip can cause the wash nozzle to jam during use.

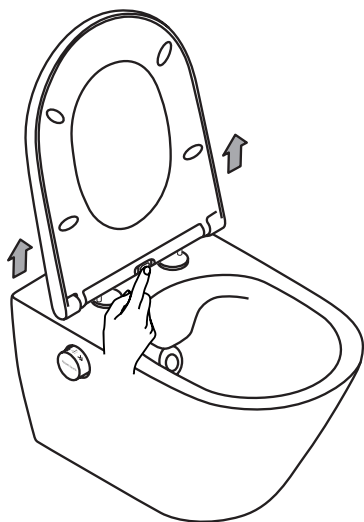


**J.** Fit the tip onto the wash nozzle, noting its position.

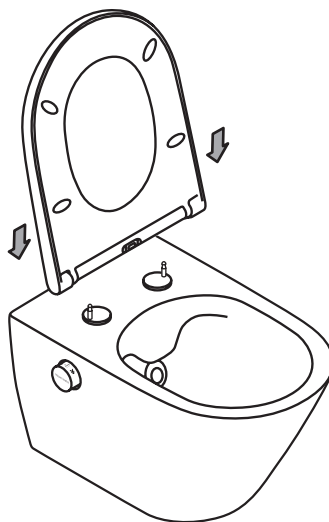


**K.** Release the nozzle to retract it.

### 5.3 Unplugging and plugging in the toilet seat



**A.** To release the toilet seat press the seat release button and pull the seat up.


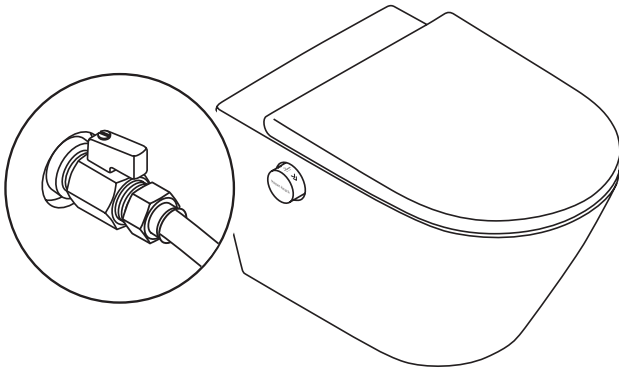


**B.** To mount the toilet seat to the base, set it on the metal pegs.



If the wash bowl is exposed to temperatures below 4°C, shut off the water supply and remove the hoses supplying water to the bowl.

## Rozdział 6 Troubleshooting

Condition	Possible cause	Solution
Standard wash / Feminine wash		
Water does not flow from the nozzle or the spray nozzle does not extend	No water supply	Wait for the water supply in the water supply system to be restored
	The water shut-off valve is closed	Open the water shut-off valve
	Abnormalities in the water supply to the appliance	Call a plumbing service
Water spray intensity too weak	Too low water pressure in the water supply system	Make sure the water pressure is at least 2 bar
	Clogged or scaled nozzle	Clean the cleaning nozzle
	Clogged filter on water inlet line	Clean or replace the water filter
	Abnormalities in the water supply to the appliance	Call a plumbing service
The water flow is too strong		Screw on the supply valve
Too warm water	The thermostat knob has been set too high	Set the water temperature lower by turning the thermostat knob backwards.
Water temperature exceeds 45°C	Incorrect thermostat calibration	Call the customer service helpline or call service
No temperature control available	No hot water or cold water supply	Check that hot and cold water supplies are provided
	Thermostat malfunction	Call the customer service helpline or call service
	Water flows or drips from the ceramic part	Close the supply valve or main water supply. Next, call the customer service helpline or call a service technician.
		

## Rozdział 7 Technical data

Model	
Maximum wash water temperature	42°C
Required feed water pressure	2.0~6.0 bar
Maximum wash water consumption	5 l/min
Maximum hot feed water temperature	70°C
Net weight of the shower toilet	30 kg
Compliance with standards	EN997, EN1717, EN33
Dimensions of the shower toilet	560x335x360

Meissen Keramik

Thank you for trusting us